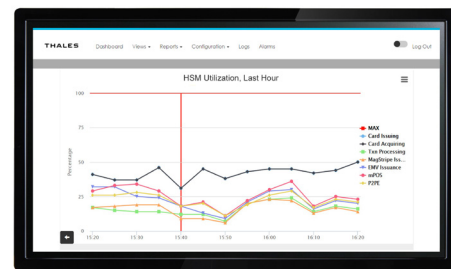


# payShield Monitor

## Consolidated monitoring of distributed HSMs

### payShield Monitor

- Provides 24 x 7 visibility on all Thales payShield hardware security modules (HSMs)
- Identifies performance bottlenecks to improve capacity planning
- Enables immediate response to potential issues through comprehensive alerts
- Eliminates the need to physically access HSMs to retrieve important data
- Integrates seamlessly with existing HSM hardware and software configurations



## Technical specifications

payShield Monitor from Thales is a comprehensive HSM monitoring platform that enables operations teams to gain 24x7 visibility into the status of all their payShield HSMs, including those residing across distributed data centers. With this solution, security teams can efficiently inspect HSMs and find out immediately if any potential security, configuration or utilization issue may compromise their mission-critical infrastructure.

## Central monitoring capabilities

- Refreshes utilization statistics for all HSMs on a per minute basis
- Provides series of warnings based on user-defined thresholds
- Delivers critical alerts based on independent user-defined thresholds
- Allows users to define the time period for in-depth analysis (last hour, 24 hours, 7 days, 30 days or custom)
- Delivers warnings and alarms via email, SNMP and remote syslog server

## HSM compatibility

- payShield 10K with base or custom software version 1.0 or later with SNMPv3 messaging enabled
- payShield 9000 with base or custom software version 1.1 or later with SNMPv3 messaging enabled

## Role-based access control

- Supports three distinct roles – Administrator, Group Manager and Auditor
- Distinct set of tasks applicable to each role supporting clear separation of duties
- Enhances security in terms of configuration and administration for overall payShield Monitor system
- Administrator manages deployment
- Group Manager controls monitoring of HSMs
- Auditor views data and reports

## Solution components

- DVD comprising payShield Monitor application as an Open Virtual Appliance (OVA) compatible with selected vSphere ESXi Hypervisor, VMware Player and Workstation virtual platforms
- Web based management interface and command line interface (CLI)
- Download of VM image supported as alternative to DVD approach
- Chrome, Firefox, and Internet Explorer browser support
- Flexible endpoint licensing mechanism supporting up to 500 HSMs

## Virtual appliance min specification

- 2 CPUs with 2 cores each
- 8 GB RAM
- Thin provisioned hard drives
- Compatible with ESXi 5.1 and later (VM Version 9)

## Security features

- Web server certificate management providing client browser to payShield Monitor authentication as part of session establishment
- Secure segregation of roles and responsibilities for Administrators and Group Managers
- Strong password policy – control of expiry and auto-logout duration
- Choice of algorithms for authentication and privacy

## About Thales

The people you rely on to protect your privacy rely on Thales to protect their data. When it comes to data security, organizations are faced with an increasing number of decisive moments. Whether the moment is building an encryption strategy, moving to the cloud, or meeting compliance mandates, you can rely on Thales to secure your digital transformation.

Decisive technology for decisive moments.